



# GAT MONTHLY MEMBERSHIP PROGRESS REPORT

Results as of: 11/30/2023

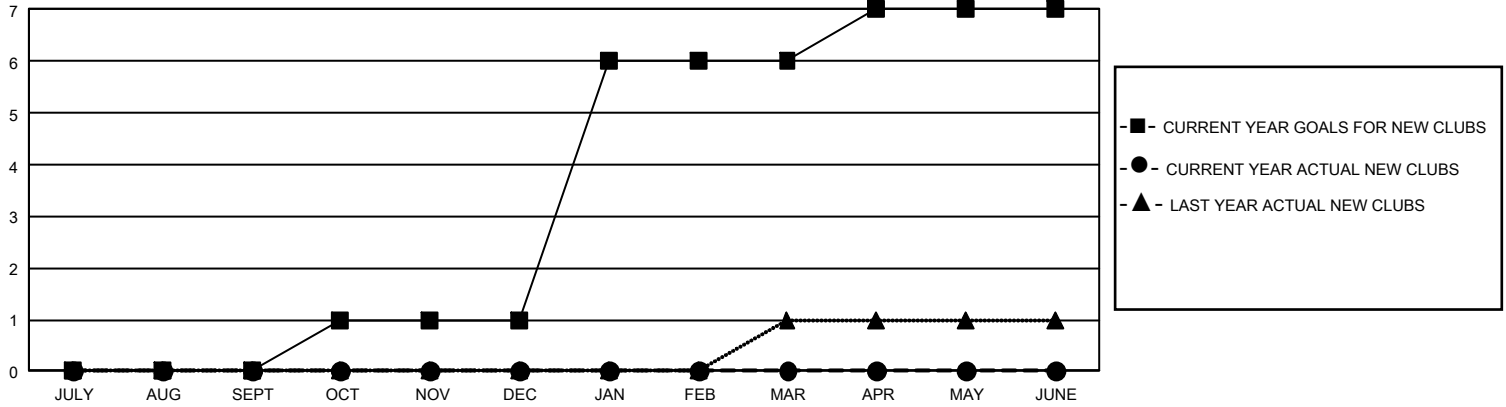
## GMT Constitutional Area 5 - J, Group H

REPORT DOES NOT INCLUDE CLUBS IN UNDISTRICTED AREAS.

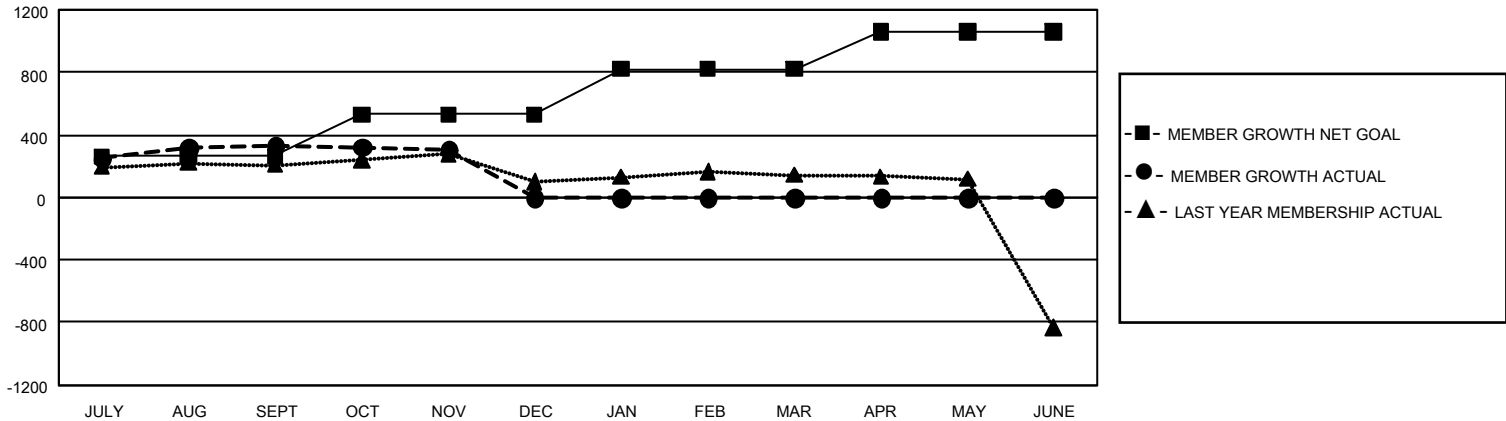
Clubs			
RESULTS FOR 2023-2024			
QUARTER	NEW CLUB GOAL	NEW CLUBS	DROPPED CLUBS
JULY/AUG/SEPT	0	0	0
OCT/NOV/DEC	3	0	0
JAN/FEB/MAR	15	0	0
APR/MAY/JUNE	3	0	0

Members			
RESULTS FOR 2023-2024			
QUARTER	MEMBER GROWTH NET GOAL	MEMBER GROWTH ACTUAL	DROPPED MEMBERS ACTUAL (including transfers)
JULY/AUG/SEPT	262	543	189
OCT/NOV/DEC	270	130	148
JAN/FEB/MAR	290	0	0
APR/MAY/JUNE	238	0	0

GOALS AND ACTUAL NEW CLUBS CUMULATIVE



GOALS AND ACTUAL MEMBERS CUMULATIVE



DROPPED CLUBS: 0	243 CLUBS OF 385 ADDED 1 OR MORE NEW MEMBERS	<u>GENDER DISTRIBUTION</u>	
<u>DROPPED MEMBERS</u>		MALE	13,563 (74.09%)
DECEASED	45	FEMALE	4,744 (25.91%)
CLUB CANCELLED	0	NON BINARY	0 (0.00%)
OTHER	292	PREFER NOT TO ANSWER	0 (0.00%)
TOTAL	337	TOTAL FAMILY UNIT MEMBERS	8,042
	<a href="#">CLICK HERE FOR CUMULATIVE MEMBERSHIP DATA</a>	FAMILY MEMBERS PAYING HALF DUES	4,402